

HAP-Z1ES, HAP-S1 v.16152R Information

List of updated items in GM9

SONY

Features	HAP-Z1ES	HAP-S1	Mobile App	
			Android	iOS
CD ripping from USB drives	○	○	-	-
Built-in DSEE HX	-	○	○	○
Support for products aimed at the Chinese and Asian market (support for simplified Chinese)	○	○	○	○
Playlist added for 'Recently played songs'	○	○	○	○
DSD Gracenote compatibility	○	○	○	○
'Get Music Info' feature available for DSD content (even for single albums or folders)	○	○	○	○
ON/OFF settings added for automatic Gracenote access	○	○	-	-

CD ripping from USB CD drives (HAP-Z1ES/S1)

New Feature : CD ripping from USB drives (HAP-Z1ES/S1)

SONY

User advantages

CD songs can be played back using ANAP cables without the need to rip CDs via a PC or to transfer via ANAP. Customers who are not familiar to PC can import CD for themselves. Just providing a CD drive will do the job.

Conventional CD ripping

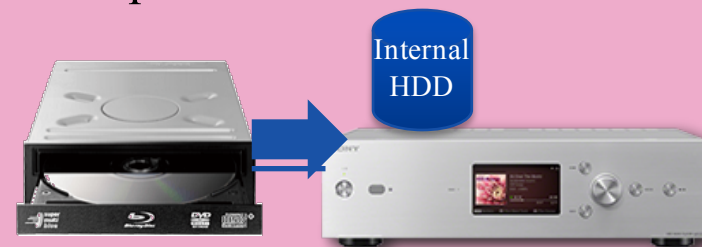
[Before]



CD ripping in the future

[After]

Import CD without PC



Music content in tablets or phones can be copied to HAP-Z1ES.
(by HDD Audio Remote Android app)

New Feature : CD ripping from USB drives (HAP-Z1ES/S1)

SONY

Operations overview

Connect the CD drive to a USB port, enter the disc, and follow the dialog box that is displayed automatically



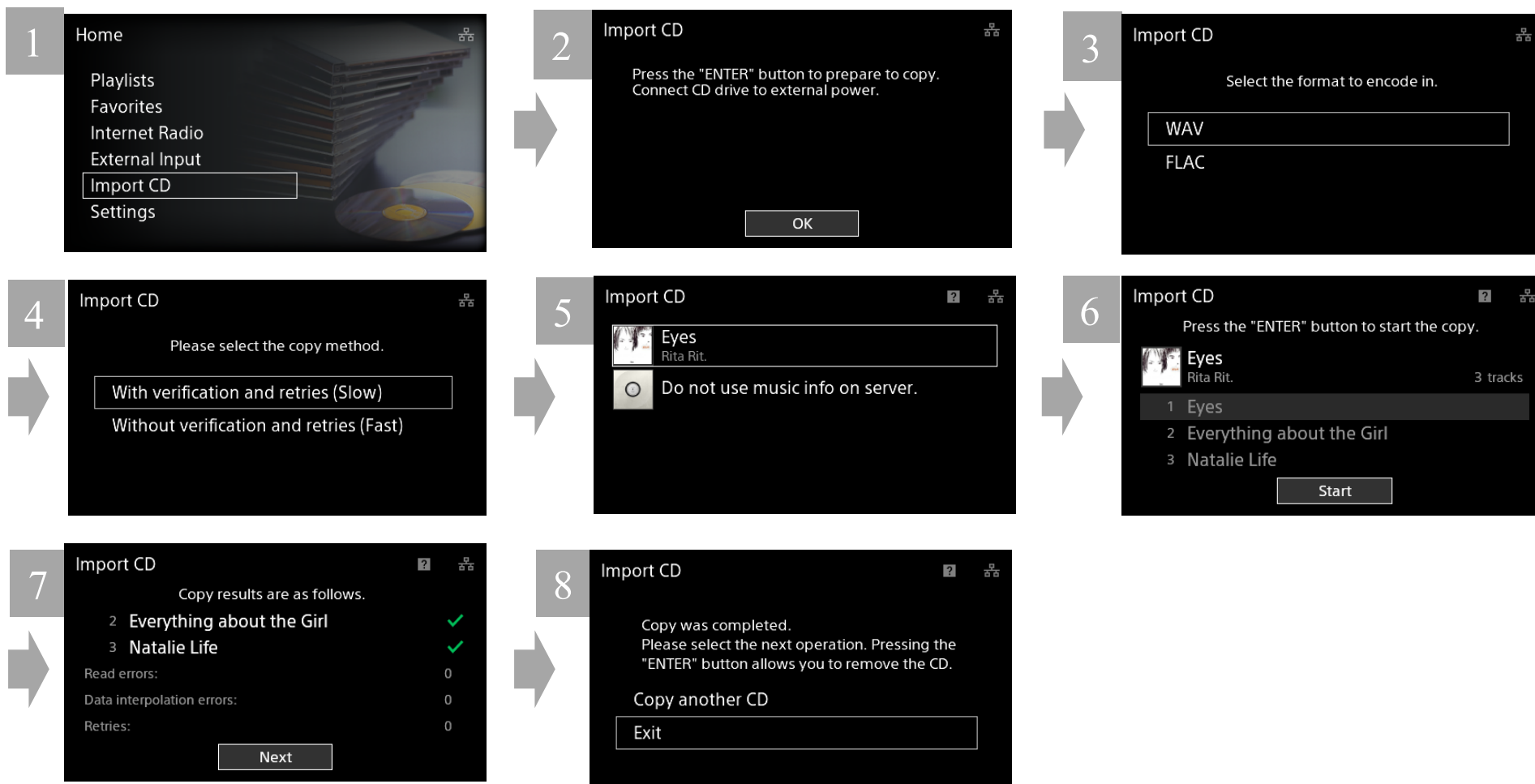
1. Select the encoding (WAV or FLAC)
2. Select the ripping method (High speed: without verification or retries; Low speed: with verification and retries)
3. Select album information (Gracenote information)
4. Confirm album information details
5. Perform ripping
6. Confirm results of ripping

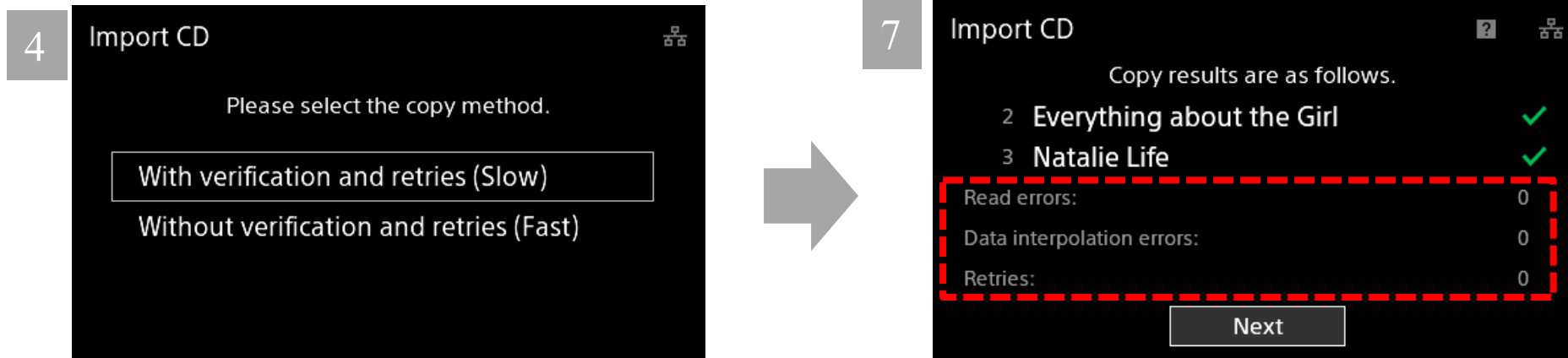
*Gracenote Metadata is added automatically.

CD ripping

Operations overview

SONY



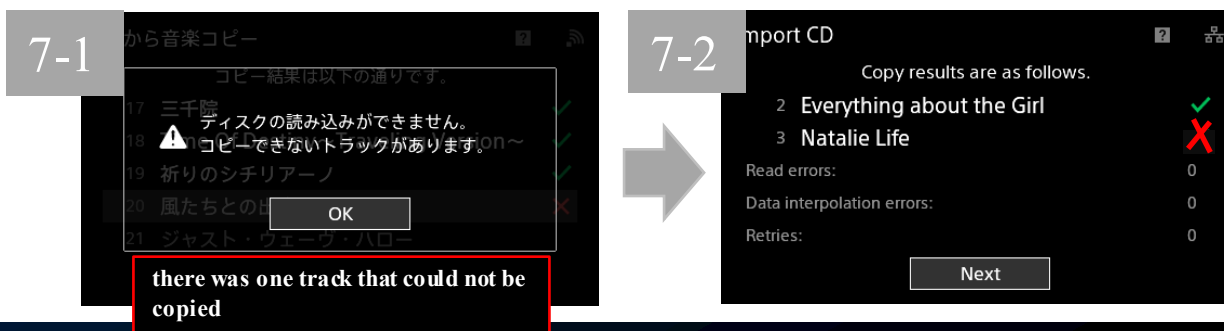


When **Slow (With verification and retries)** is selected, three verification results will be output. (See inside broken red lines)
No verification results are output when **Fast (Without verification and retries)** is selected. (No results are displayed)

* Example

When ripping was performed in High speed (no verification or retries), there was one track that could not be copied (see right-hand figure)

However, the track could be copied when the disc was ripped in Low speed (with verification and retries).



Other New Features

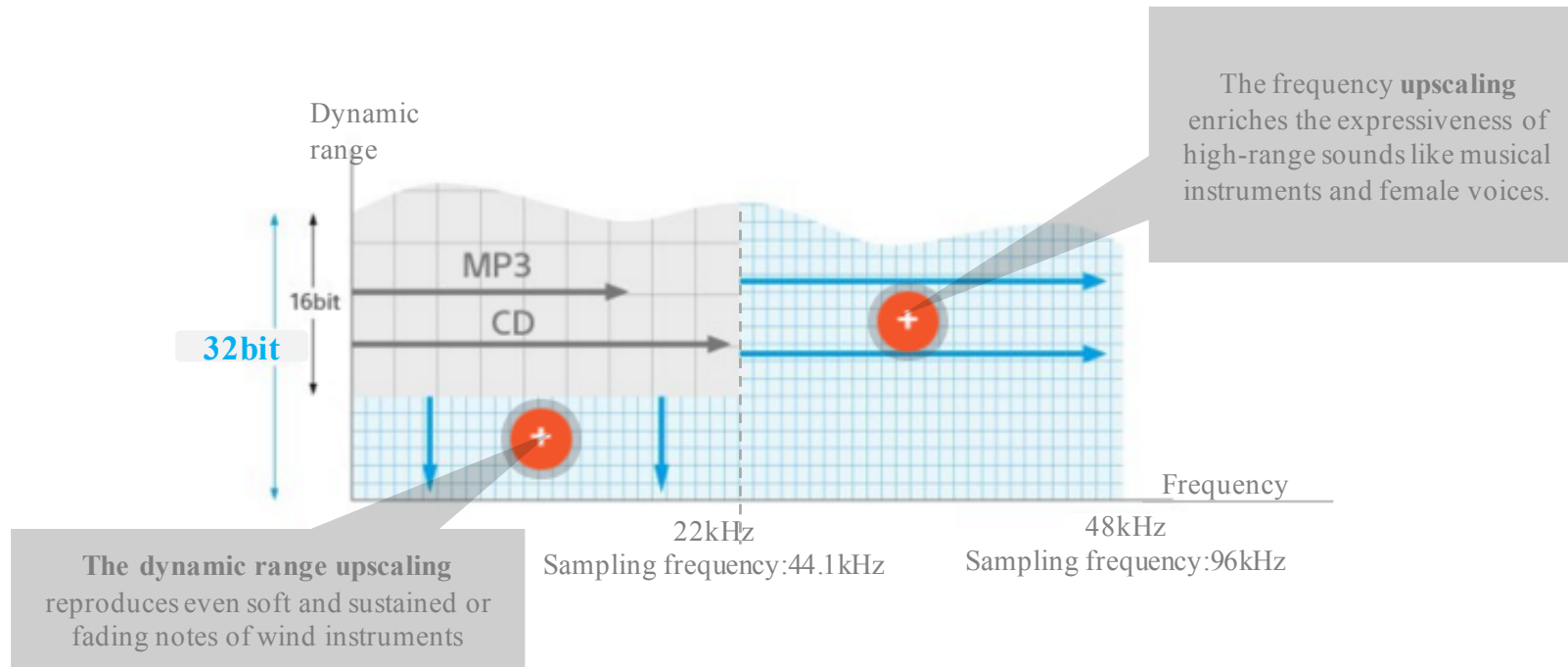
Add DSEE-HX (HAP-S1 only)

SONY

User advantages

CD music can be enjoyed in premium audio quality equivalent to Hi-Res.

DSEE HX up-scales audio to the level of Hi-Res Audio by increasing the sampling frequency and bit depth of CD and compressed sound to greater than the original.



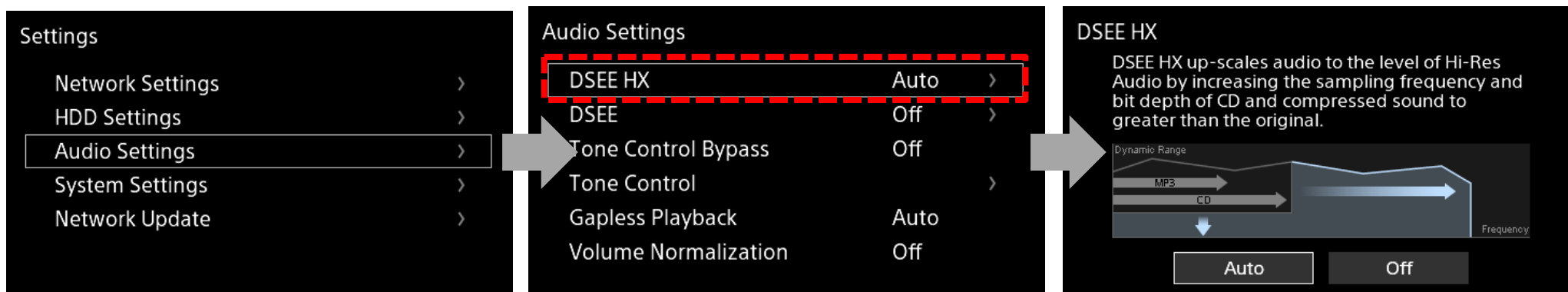
Add DSEE-HX (HAP-S1 only)

SONY

Operations overview

Select 'Auto' as the DSEE HX setting in the menu below.

- Main unit: Audio settings menu or playback screen menu
- Mobile: Options menu



Settings → Audio settings → Select DSEE HX Auto.

- We'll remain the DSEE because the sound quality evaluation is different from depending on people. (DSEE/DSEE HX is chose alternatively.)
- HAP-Z1ES will NOT add DSEE HX because the DSD re-mastering engine is better than DSEE HX. (in logically and auditory).

Support for products aimed at the Chinese and Asian market

(HAP-Z1ES/ST) **SONY**

(support for simplified Chinese)

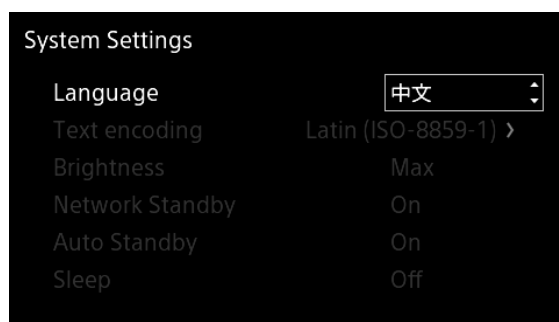
User advantages

Chinese language content can be displayed correctly.

This support must be considered in order to sell this product in mainland China.

Operations overview

By default, Chinese is selected as the language for products aimed at the Chinese market.



Settings → System settings → Select 'Chinese' from languages.



Playlist added for 'Recently played songs'

(HAP-Z1ES/S1)

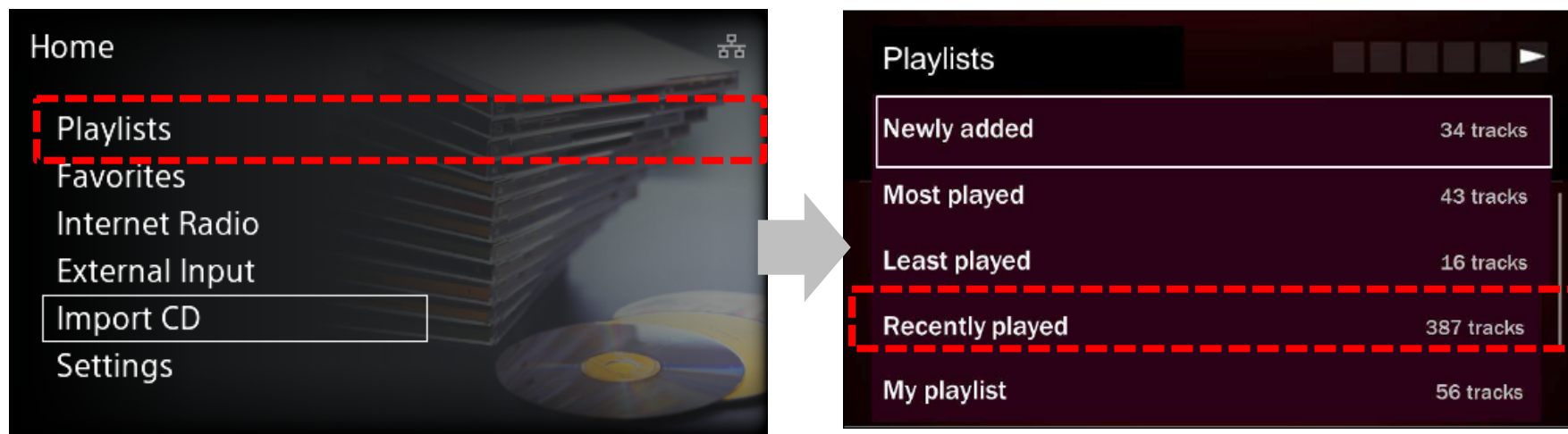
SONY

User advantages

In addition to the conventional 'Most played' and 'Least played' song playlists, a new 'Recently played' playlist has been added to show the user's song history, automatically adding songs as they are played.

Operations overview

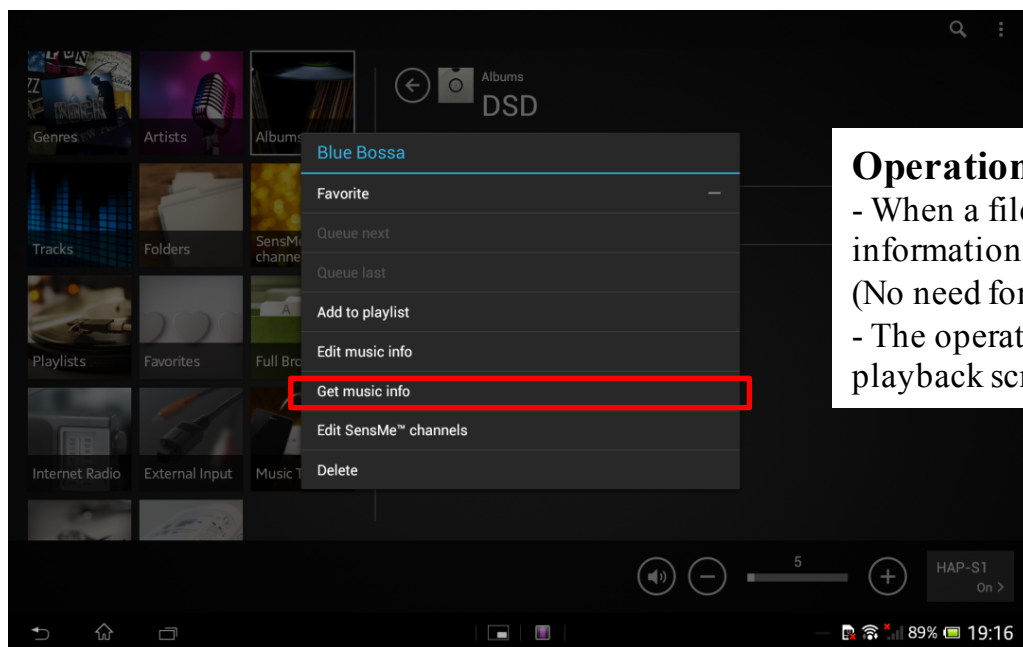
Songs are automatically registered in this playlist once they have been played to the end.



Home → Playlist → Select 'Recently played' → Select song from the list → Play

User advantages

- Enables music information to be obtained for DSD songs.
- DSD songs will also be registered automatically in the 'SensMe™' channel.
- There is no need to consider whether a song is in Direct Stream Digital (DSD) format, as operations are the same as for other CODECs.



Operations overview

- When a file is added, Gracenote can now automatically detect information for songs in DSD format as well
(No need for users to worry about a song's format)
- The operation to 'Obtain music information' on the browser screen or playback screen is the same as for other CODECs.

ON/OFF settings for automatic Gracenote access

(HAP-Z1ES/S1)

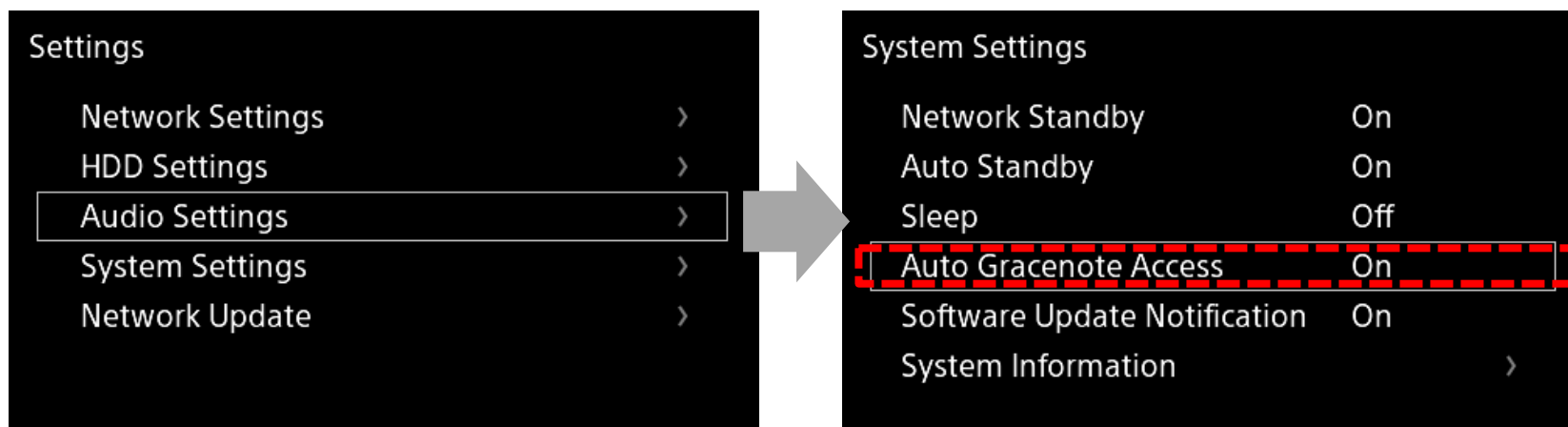
SONY

User advantages

If the indicator that rotates while this information is being automatically obtained is annoying to the user, it can be stopped.



Operations overview



Settings → System settings → Switch automatic Gracenote access ON/OFF

HAP-Z1ES, HAP-S1

Supports direct ripping using a USB CD Drive (GM9)

Premise

- The included USB port can only handle power up to MAX1A.
- Therefore, operation cannot be guaranteed when driven using USB bus power.
Sony recommends using a drive that can be connected via an AC adapter.
We have also confirmed connection using a USB Y cable to supply power.

Recommended devices

Although operation cannot be guaranteed, we were able to confirm connection using some devices.

→Refer to the following page.

These are confirmed ripping but there is no guarantee

- LG
GP50NB40



- SAMSUNG
SE-208GB/RSBD



- SANOXY
USB External DVD Combo CD-RW Burner Drive



- BUFFALO
BRXL-16U3



- Apple
USB Super Drive MD564ZM/A



Together with
Y Adapter USB Data Cable with Two Male
and One Female Connector

